

ACRYLIC BODY ROTAMETERS



- ◆ Easy Projection Mounting
- ◆ Neat Modular Appearance
- ◆ Direct Reading Scale
- ◆ Shatter Proof Acrylic Body
- ◆ Suitable For Gas & Liquid Flow
- ◆ Unique Flush Panel Mounting (Series FSB)
- ◆ Light Weight, Compact
- ◆ Built- In Flow Control Valve (Series FSA, FSB)
- ◆ Best Visibility

APPLICATIONS

These meters with all plastic fittings to eliminate corrosion completely. The meters are useful for measuring flow of air, common gases, water and many organic chemicals, excluding petroleum products. Applications include purging of gas lines, anaesthesia, laboratory instruments, leak detection, cable pressurization, industrial furnaces and chromatography etc.

Gas Lines

Leak Detection

Chromatography

Cable Pressurization

Anaesthesia

Industrial Furnaces

Laboratory Instruments

OPERATING PRINCIPLE

The essential working part is a tapered flow tube precision machined inside the acrylic body. When flow occurs, the position of a float within the tube indicates flowrate on a calibrated scale engraved on the acrylic body. With integral construction, a needle valve and flow parts (Model FSA & FSB) are built into the acrylic body, resulting in a very compact and economical design. The unique "front plate" design (Model FSB) the beauty of any panel where the meter is installed.





FSA



FSB

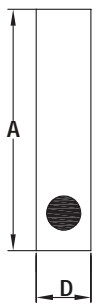
FSA FSB

SPECIFICATIONS SERIES FSA,FSB

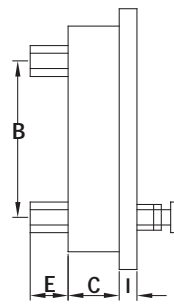
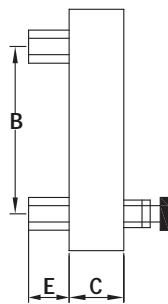
Meter Body	Acrylic
Float	SS 316, PTFE, PVC etc.
Wetted Parts	SS, PVC, P.P, PTFE etc.
O-Rings	Neoprene, PTFE Silicon etc.
Scale	Engraved on Body
Temp. Rating	160°F
Connection	Threaded BSP/NPT Female or Male
Accuracy of	Series 100 & 150 ±3%
Full Scale	Series 200, 300, & 350 ±2%
Repeatability	0.5%
Rangeability	10:1

SERIES FSA & FSB MODEL & RANGES

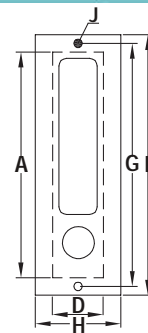
Model	Air at Amb. Temp		Pressure Rating Maximum	Model	Water at 20°C		Pressure Rating Maximum	
	LPM	NM ³ /HR			LPM	LPH		
FSA & FSB 100	0.1-1		2 Kg/Cm ²	FSA & FSB 100		0.4-5	2 Kg/Cm ²	
	0.2-2					1-10		
	0.4-5					3-30		
	1-10				0.1-1	4-50		
	2-20	0.1-1.2			0.15-1.5	10-100		
	3-30	0.15-1.8			0.4-4	20-250		
150	15-150	0.8-9	3 Kg/Cm ²	200	0.2-2.5	15-150	3 Kg/Cm ²	
200	10-100	0.6-6			300	0.4-5		30-300
300	15-160	1-10				0.8-8		40-500
	20-250	1.5-15				1-10		60-600
	40-500	3-30			1.5-16	100-1000		
350	80-800	4-50			350	2-25		150-1500
	100-1000	6-60	3-30	200-2000				
			4-40	200-2500				



MODEL FSA



MODEL FSB



OVERALL DIMENSIONS (MM) FSA, FSB

Series FSA/FSB	A	B	C	D	E	F	G	H	I	J HOLE ø	Connection BSP" F"
100	150	114	28	28	20	180	166	32	3	5	¼"
150	150	110	35	28	20	180	166	38	3	5	¼"
200	195	159	28	28	20	225	210	38	3	5	¼"
300	250	200	40	40	25	290	275	52	3	5	½"
350	250	194	48	42	25	290	275	52	3	5	¾"



FSC

SPECIFICATIONS SERIES FSC

Meter Body	Acrylic
Float	SS 316, PTFE, PVC etc.
Wetted Parts	SS, PVC, P.P, PTFE etc.
O-Rings	Neoprene, PTFE Silicon etc.
Scale	Engraved on Body
Temp. Rating	160 °F
Connection	Flanged Or Threaded
Accuracy of	Series 100 & 150 ±3%
Full Scale	Series 200, 300, 350 & 400 ±2% Series -450, 500, 600, 700 & 800 ±2%
Repeatability	0.5%
Rangeability	10:1

SERIES FSC MODEL & RANGES

Model	Air at Amb. Temp		Pressure Rating Maximum	Model	Water at 20 °C		Pressure Rating Maximum
	LPM	NM ³ /HR			LPM	LPH	
FSC 100	0.04-5		2 Kg/Cm ²	FSC 100		0.4-5	2 Kg/Cm ²
	0.1-1				1-10		
	0.2-2				3-30		
	04-5				4-50		
	1-10				10-100		
	2-20	0.1-1.2			20-250		
	3-30	0.15-1.8			15-150		
150	4-50	0.3-3	300	0.4-5	30-300	5 Kg/Cm ²	
200	8-75	0.4-4.5		0.8-8	40-500		
	10-100	0.6-6		1-10	60-600		
	15-160	1-10		1.5-16	100-1000		
	20-250	1.5-15		2-25	150-1500		
	40-500	3-30		3-30	200-2000		
				4-40	200-2500		
350	80-800	4-50	400	4-50	300-3000	15 Kg/Cm ²	
	100-1000	6-60		6-60	400-4000		
	150-1500	10-100		8-80	400-5000		
	200-2000	10-120		10-100	600-6000		
	200-2500	15-150		10-100	600-6000		
				10-130	600-8000		
				10-130	600-8000		
450		20-200	500	10-160	1000-10000	15 Kg/Cm ²	
				20-200	1000-12000		
				20-250	1000-15000		
				20-300	1000-18000		
				30-330	2000-20000		
				40-400	2000-25000		
				40-500	3000-30000		
500		25-250	600	60-600	3600-36000	15 Kg/Cm ²	
		30-300		40-400	2000-25000		
		40-400		40-500	3000-30000		
		50-500		60-600	3600-36000		
		60-600		40-400	2000-25000		
		70-700		40-500	3000-30000		
		80-800		60-650	4000-40000		
600		80-800	700	80-800	5000-50000	15 Kg/Cm ²	
		100-1000		100-1000	6000-60000		
		120-1200		100-1300	6000-60000		
				160-1600	10000-80000		
				200-2000			
				250-2500			
				250-2500			
650		80-800	800	100-1000		15 Kg/Cm ²	
		100-1000		150-1300			
		120-1200					
700		80-800					
		100-1000					
		130-1300					
		160-1600					
		200-2000					
		250-2500					
800		250-2500					

SPECIAL SIZES & RANGES ON REQUEST

Series	A	B	C	D	Connection BSP/F Flange
100	190	28	150	¼"
150	190	32	150	¼" & ½"
200	240	28	195	¼"
300	250	275	35	180	½"
350	250	275	42	180	¾"
400	300	325	55	230	1" & 1½"
450	400	450	60	320	1" & 1½"
500/600	400	450	70	320	1½" & 2"
650	450	85	320	2" & 2½"
700	450	100	320	2 ½" & 3"
800	450	100	320	4"

