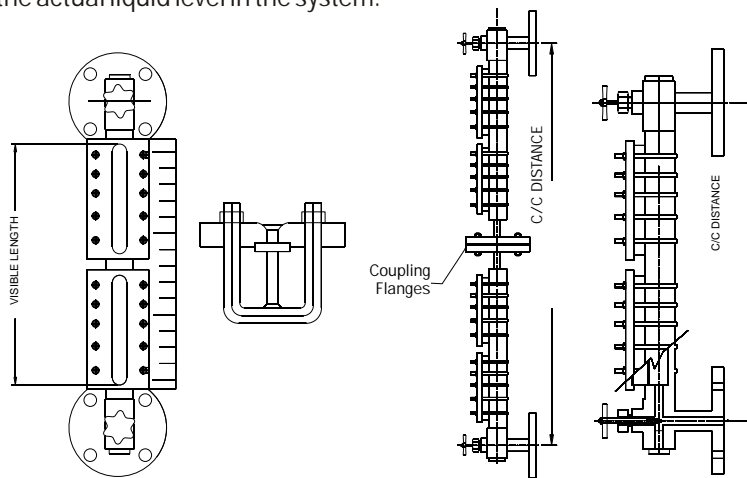


REFLEX LEVEL INDICATORS

Reflex Level Indicator reflex gauges give an accurate reading of liquid levels. Colourless liquids can be seen using the principles of light reflection and reflection through the special prism glass. Light striking the area of glass covered by the liquid is allowed to pass to the interior of the gauge - this area appears black. Light striking the area of glass above the liquid is reflected black silver. The distinct line that separates the black and silver areas shows the actual liquid level in the system.



FERG-100

- | | | |
|--|---|--|
| 1) Type | : | Reflex |
| 2) Mounting | : | Side - Side /Top -Bottom |
| 3) C/C Distance | : | To Mention |
| 4) Visible length/ No. of section | : | To Mention |
| 5) Service | : | To Mention |
| 6) Op. pressure kg/Cm2g/temp.°C/ Sp Gr | : | To Mention |
| 7) Hydro test Pressure Kg/Cm2g | : | 1.5 times of Max Pressure |
| 8) Process Conn. Flange size & rating | : | To Mention |
| 9) Process Conn. Flange Material | : | To Mention |
| 10) Material of Construction | : | Toughened Borosilicate Imported Kinger / Maxos / Indian make |
| 11) Material of Construction | : | CS/SS 304/SS316/PP/PTFE |
| 12) Material of Cover Plate | : | CS to ASTM A-105 (Non wetted parts) |
| 13) Valve Type / Design | : | Ball Check / Auto Shut -Off |
| 14) Valve Body Material | : | CS/SS 304/SS316/PP/PTFE |
| 15) Valve Trim Material | : | SS 316 |
| 16) Vent / Drain connection | : | ½" NPT (F) with Plug (OR) To Mention. |
| 17) Material of bolts & nuts | : | SS 316 MS, EN-8, SS or to mention |
| 18) Gaskets/seals | : | CAF, AF 120, PTFE
Line are engraved @ each 10mm |
| 19) Scale | : | Aluminum / Acrylic / SS Linear marking |
| 20) Least count | : | 1mm, 5mm & 10mm or to Mention |

POSITIONING

These gauges are connected on the side of vessels, have liquid chamber made of single piece metallic bar stock. Clear visibility of the path of the liquid in the chamber is provided by clamping & Sealing firmly on the chamber heavy duty toughened glasses.

APPLICATION

Boiler, Ammonia Receiver, solvent etc.

ACCESSORIES

Isolation valve, drain valve, vent valve -steam jacket arrangement, frost free

OPTION

IBR Approved available on request Application is widespread in Petrochemical, Power, Fertilizer, and Pharmaceutical chemical Industries.

DETAILS REQUIRED FOR QUOTATION

- 1) Center to center distance
- 2) Material of construction of body/liquid chamber
- 3) Material of construction of cover plate
- 4) Connection detail
- 5) Operating pressure & temperature
- 6) IBR or non IBR