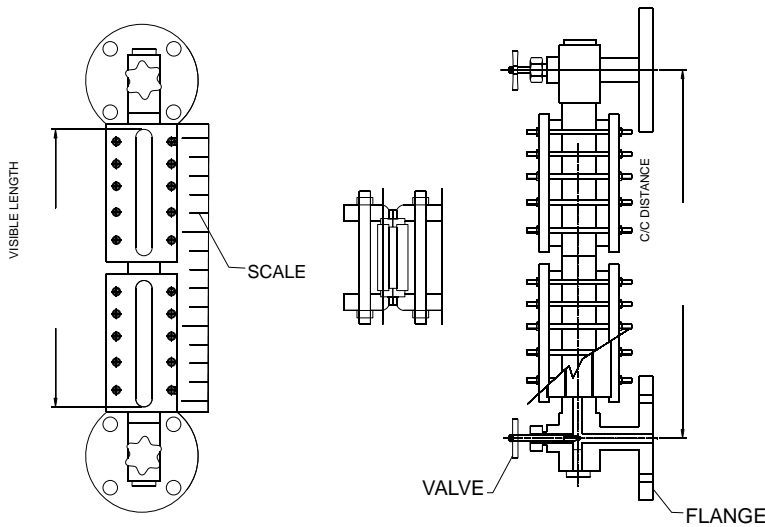


TRANSPARENT LEVEL INDICATORS

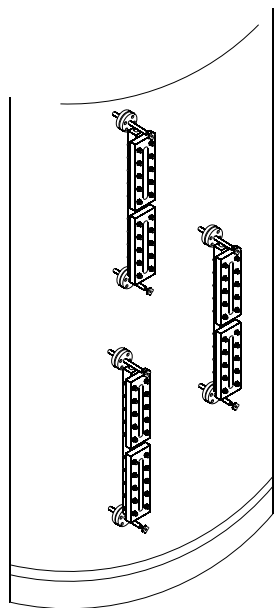
Transparent gauges give an accurate reading of liquid level, clear glass is mounted on the front and back of the gauge. This permits the observer to see not only the level of the liquid, but also its characteristics such as colour or the interface between two immiscible liquids in the same system.



Transparent Level Indicator
Model No. FETG-200



LEVEL INDICATOR



Transparent

- | | | |
|---|---|--|
| 1) Type | : | Transparent |
| 2) Mounting | : | Side - Side /Top -Bottom |
| 3) C/C Distance | : | To Mention |
| 4) Visible length/ No. of section | : | To Mention |
| 5) Service | : | To Mention |
| 6) Op. pressure kg/Cm2g/temp. °C/ Sp Gr | : | To Mention |
| 7) Hydro test Pressure Kg/Cm2g | : | 1.5 times of Max Pressure |
| 8) Process Conn. Flange size & rating | : | To Mention |
| 9) Process Conn. Flange Material | : | To Mention |
| 10) Material of Construction | : | Toughened Borosilicate Imported Kinger / Maxos / Indian make |
| 11) Material of Construction | : | CS/SS 304/SS316/PP/PTFE |
| 12) Material of Cover Plate | : | CS to ASTM A-105 (Non wetted parts) |
| 13) Valve Type / Design | : | Ball Check / Auto Shut -Off |
| 14) Valve Body Material | : | CS/SS 304/SS316/PP/PTFE |
| 15) Valve Trim Material | : | SS 316 |
| 16) Vent / Drain connection | : | ½" NPT (F) with Plug (OR) To Mention. |
| 17) Material of bolts & nuts | : | SS 316 MS, EN-8, SS or to mention |
| 18) Gaskets/seals | : | CAF, AF 120, PTFE
Line are engraved @ each 10mm |
| 19) Scale | : | Aluminum / Acrylic / SS Linear marking |
| 20) Least Count | : | 1mm, 5mm & 10mm or to Mention |

DETAILS REQUIRED FOR QUOTATION

1. Center to center distance
2. Material of construction of body/liquid chamber
3. Material of construction of cover plate
4. Connection detail
5. Operating pressure & temperature
6. IBR or non IBR

