

DOMESTIC WATER METERS MULTI JET 15 MM - 40 MM (1/2" - 1 1/2 ")

An inferential, multijet, dry type water meter with magnetic drive and vacuum sealed register.

FEATURES

- 1) Highly sensitive to low flow rates and very accurate over its entire flow range
- 2) Low head loss
- 3) Vacuum sealed, leak proof and dry Totaliser
- 4) Self-lubricating gears
- 5) Long maintenance free working life

STANDARDS

Conforms to ISO 4064, Class-B.

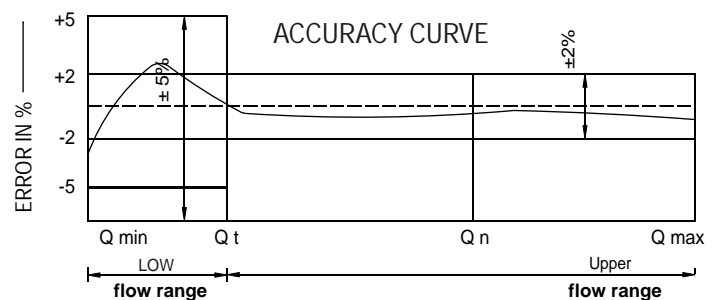
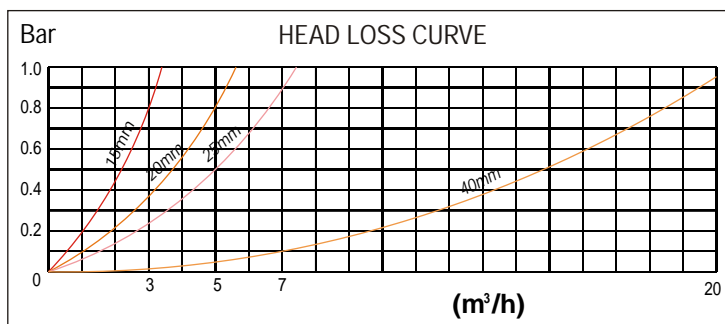
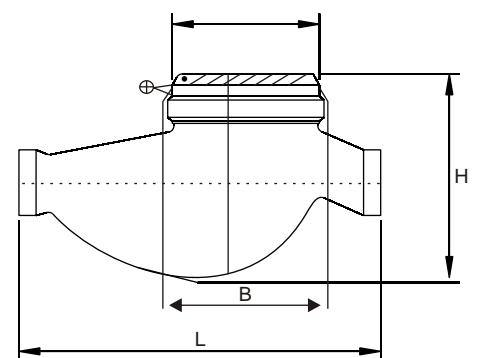


DIMENSIONS

DESCRIPTION	15mm	20mm	25mm	40mm
Meter Thread	3/4" BSP	1" BSP	1 1/4" BSP	2" BSP
End connection threads	1/2" BSP	3/4" BSP	1" BSP	1 1/2" BSP
Length of meter with coupling	250mm	290mm	380mm	430mm
Length of meter without coupling L	165mm	195mm	225mm	245mm
Height H	110mm	113mm	115mm	155mm
Width B	96mm	96mm	100mm	124mm
Weight with coupling	1.49kg.	1.80kg.	2.10kg.	5.50kg.

	Accuracy	15mm	20mm	25mm	40mm
		CL-B	CL-B	CL-B	CL-B
Lower limit of flow, Q _{min} 1/h	±5%	30	50	70	200
Transitional flow, Q _t 1/h	±2%	120	200	280	800
Nominal Flow, Q _n 1/h	±2%	1500	2500	3500	10000
Maximum Flow, Q _{max} 1/h	±2%	3000	5000	7000	20000
Test pressure		2Mpa	2Mpa	2Mpa	2Mpa
Temperature suitability °C		50 °C	50 °C	50 °C	50 °C
Dial Registration KL		99999	99999	99999	99999
Smallest reading lts.		0.05	0.05	0.05	0.05

DIMENSIONS (MM)



WATER METER 50NB TO 500NB

A removable mechanism type Woltman Water meter With magnetic drive and vacuum sealed register.

FEATURES

- 1) Leak proof and sealed totaliser
- 2) Magnetic drive
- 3) Repairable without interrupting water supply
- 4) Removable mechanism ensures easy maintenance
- 5) Totaliser protected by metallic cover
- 6) Reliable sensitive metrology and low pressure loss
- 7) Remote reading facility/pulse output available on request

STANDARDS

Conforms to ISO 4064, Class-B

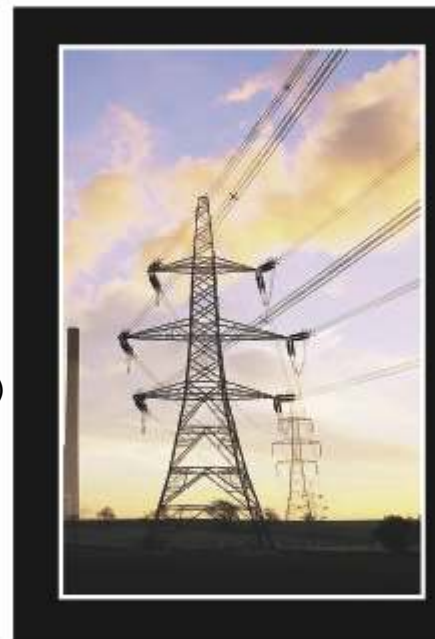
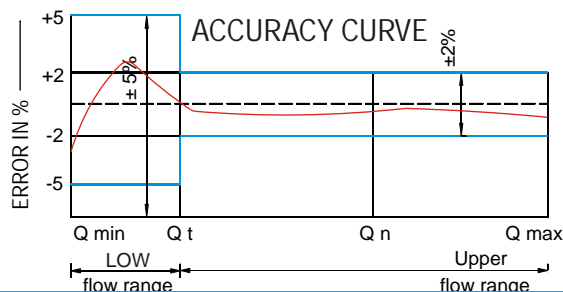
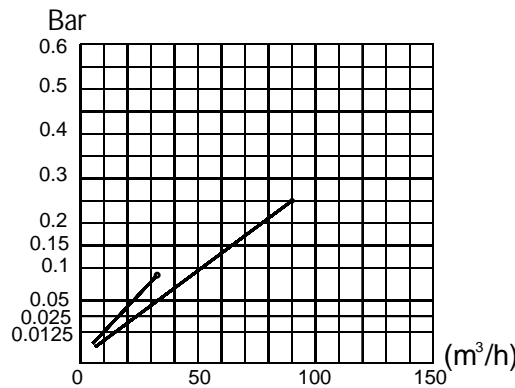
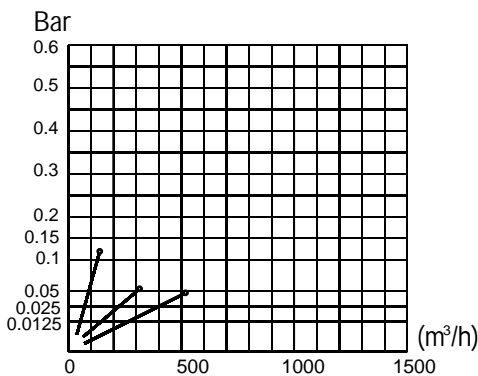
APPLICATION

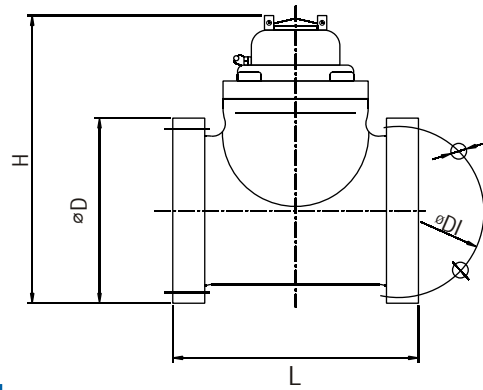
Meter Suitable for use to measure the total flow of water passing through pipeline in waterworks, mining and industrial enterprises.



Size of meter	Units	Acc (%)	50 mm	80 mm	100 mm	150 mm	200 mm	250mm	300mm	400mm	500mm
Minimum flow Q min	m ³ /h	±5	0.45	1.20	1.80	4.50	7.50	12.00	18.00	30.00	45.00
Transitional flow Q _t	m ³ /h	±2	3	8	12	30	50	80	120	200	300
Nominal flow Q _n	m ³ /h	±2	15	40	60	150	250	400	600	1000	1500
Maximum flow Q max	m ³ /h	±2	30	80	120	300	500	800	1200	2000	3000
Minimum Reading	m ³		0.0002	0.0002	0.0002	0.002	0.002	0.002	0.002	0.1	0.1
Maximum Reading	m ³		999999	999999	999999	9999999	9999999	9999999	9999999	9999999	9999999
Temperature Suitability °C			50°C	50°C	50°C	50°C	50°C	50°C	50°C	50°C	50°C
Working Pressure	Mpa		<1.6 Mpa	<1.6 Mpa	<1.6 Mpa	<1.6 Mpa	<1.6 Mpa	<1.6 Mpa	<1.6 Mpa	<1.6 Mpa	<1.6 Mpa

HEAD LOSS CURVE

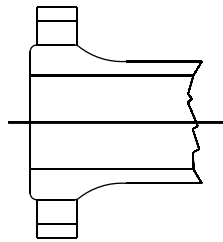




DIMENSIONS

DIMENSIONS

Size of meter	50 mm	80 mm	100 mm	150 mm	200 mm	250mm	300mm	400mm	500mm
Length (L) mm	200	225	250	300	350	450	500	600	800
Height (H) mm	260	280	290	320	364	470	492	631	740
Weight kg	10.6	15.4	18.6	31.6	46	94	114	199	340



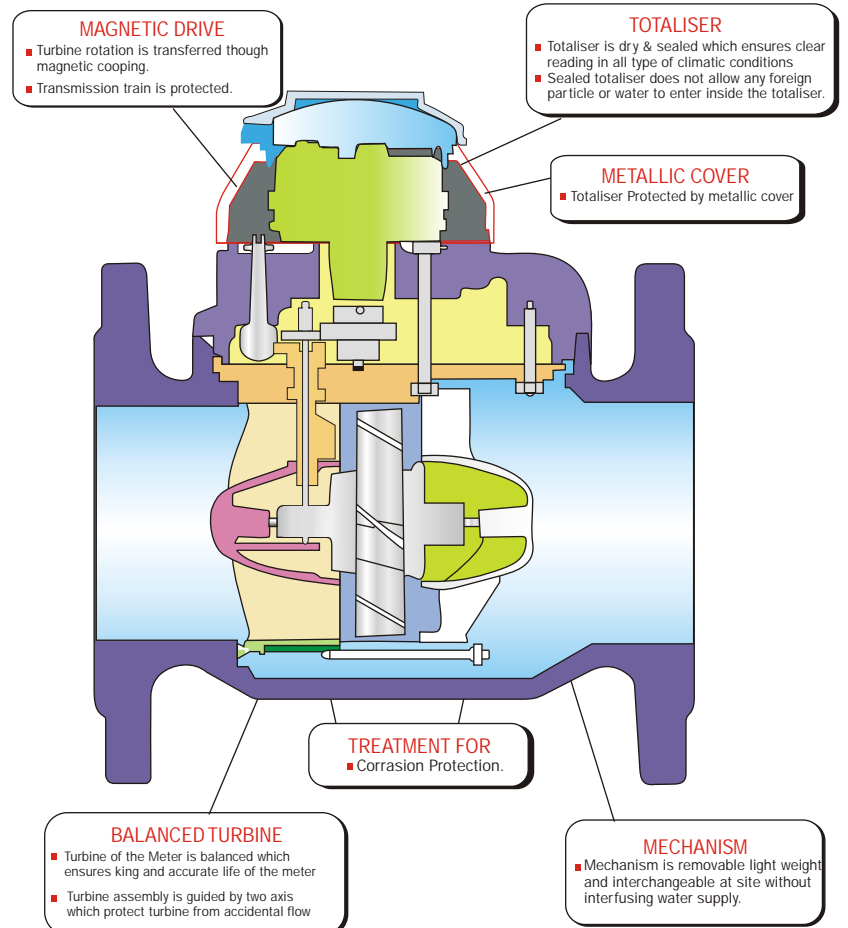
FLANGE DETAIL

FLANGE DETAILS

Size of meter	50 mm	80 mm	100 mm	150 mm	200 mm	250mm	300mm	400mm	500mm
Bolt circle (Dia.) mm	125	160	180	240	295	355	410	515	620
Dia of flange hole	19	19	19	23	23	23	23	24	24
Numbers of Bolts	4	8	8	8	8(12)	12	12	16	20
Flange outer dia (Dia.) mm	165	200	220	285	340	395	445	565	670

INSTALLATION

FILTERS: We strongly recommend the installation of a filter upstream of the meter to protect the mechanism. **FLOW STRAIGHTENER:** If flow straightener is not provided a straight length of 14D & 10 D of the pipe dia must be provided on the upstream & the downstream side of the meter.



WOLTMAN WATER METER
ISO CLASS-B HORIZONTAL
HELIX REMOVABLE MECHANISM
MAGNETIC DRIVE